

The Parish of Louth



**ANNUAL REPORT OF THE
PAROCHIAL CHURCH COUNCIL OF
THE PARISH OF LOUTH FOR 2015**

**Presented to the Annual Parochial Church
Meeting on 28th April 2016**

Contents

The Annual Report

Page 3	Reference and administrative information
Page 4	Structure, governance and management
Page 5	Objectives and activities
Page 6	Each of our church communities
Page 6	Safeguarding
Page 6	Financial review
Page 7	Funds held as custodian trustees
Page 8	Parish Ministry Team: Review of 2015
Page 8	Theme 1: Prayer and Worship
Page 9	Theme 2: Growing closer to God
Page 9	Theme 3: Reaching out to all those touched by Christ
Page 10	Theme 4: Making visible God's love for all
Page 11	Theme 5: Resourcing our work

Reference and administrative information

This is the annual report for the activities of The Parochial Church Council for the Parish of Louth (the 'PCC') for the year from 1st January to 31st December 2015.

The churches and chapels in the parish are:

- The Parish Church of All Saints, South Elkington
- The Parish Church of St. Andrew, Stewton
- The Parish Church of St. James, Westgate, Louth
- The Parish Church of St. Martin, Welton-le-Wold
- The Parish Church of St. Michael, Church Street, Louth
- Trinity Centre, Eastgate, Louth (incorporating the Chapel of Holy Trinity, Louth)

The address for official correspondence for the PCC is: c/o The Deanery Office, 6 Ugate, Louth LN11 9ET.

The bankers to the PCC are: Lloyds Bank, Mercer Row, Louth.

The following people have been members of the PCC during the period being reported:

- Licensed clergy:
- The Reverend Nick Brown
 - The Reverend Christine Hawkins (from 25th January 2015)
 - The Reverend Robert Mansfield
 - The Reverend Kate Toogood
 - The Reverend Matthew Harbage (from 5th July 2015)
- Readers:
- Dr Paul Hill
 - Mrs Ronnie Partridge
 - Mrs Sylvia Pounds
- Churchwardens:
- Ms Eileen Byrne (until 2015 APCM)
 - Mr Jim Cave
 - Mr Charles Dobson
 - Mr Brian Luckwell
 - Mrs Sylvia Luckwell (from 2015 APCM)
 - Mrs Dorothy Mansfield
 - Mr John Myers
 - Mrs Kate Roberts
 - Miss Helen Rushby (from 2015 APCM)
 - Mr John Troughton
 - Mrs Maria Vincent (until 2015 APCM)(**Lay vice-chair until 2015 APCM**)
 - Mr David Wormald
- Deanery Synod:
- Mr Mike Crosby (**Treasurer**)(**Lay Vice-chair from 2015 APCM**)
 - Mrs Jill Day
 - Mr Greg Gilbert (from 2015 APCM)
 - Dr Paul Hill
 - Mrs Joyce Leighton
 - Mrs Pru Wormell
- General Synod:
- Mrs Sylvia Pounds
- Elected Members:
- Mrs Margaret Anderson
 - Mrs Adele Lee (from 2015 APCM)
 - Mrs Sylvia Luckwell (until 2015 APCM)
 - Mrs Jane Rushby
 - Mr Peter Taylor
- Co-opted:
- Mrs Jennifer Goodwin (**Secretary**)

In the normal course of events the day-to-day activities of the PCC are delegated to the appropriate Churchwardens, DCCs or PCC officers who work alongside the various members of the Ministry Team serving the parish.

Structure, governance and management

The Parochial Church Council of the Parish of Louth is a corporate body established in law as part of the Church of England. The PCC operates under the legal powers and provisions of the Parochial Church Council Powers Measure¹ and the Church Representation Rules.² The PCC exceeds the limits for exception from registering with the Charity Commission, and is therefore registered under the name of 'The Parochial Church Council of the Ecclesiastical Parish of Louth' (Charity No. 1132658). The geographical parish which the PCC of the Parish of Louth serves is coterminous with that which is served by the Parish of Louth Team Ministry, which was established by a Scheme made under the Pastoral Measure 1968 in 1974.

The appointment of PCC members is governed by and set out in the Church Representation Rules, under which a scheme has been drawn up for the representation of five districts within the parish. In line with these provisions, membership of the PCC is provided for as follows:

Ex officio members of the PCC:

- All ordained and lay ministers licensed within the parish
- 2 Churchwardens for each of the 5 districts within the Parish
- Representatives to Deanery Synod (the maximum number is decided by Diocesan Synod)
- Any member of Diocesan Synod or the General Synod entitled to be a member

Elected members of the PCC:

- One member per hundred electors (or part thereof) within each district

Co-opted members of the PCC:

- The PCC is entitled to co-opt additional members up to one fifth of the number of elected members.

On appointment/election, members of the PCC are informed of their status as charity trustees and the broad remit of their responsibilities both under church and charity law. PCC members are informed, via the PCC Secretary, of training opportunities provided by the diocese.

As is legally required, the PCC has a Standing Committee that comprises the Rector, two Church Wardens (elected by, and from among, the churchwardens), the lay vice-chair of the PCC, the secretary of the PCC, the treasurer of the PCC, and three ordinary members of the PCC (elected by the PCC). The Standing Committee has the power to transact business on behalf of the PCC between its meetings. In addition to the Standing Committee the following groups have powers delegated to them as described:

District Church Councils for each of the five parish churches have powers delegated under a scheme established in 1995 and are responsible, through their Churchwardens and PCC representatives, to the PCC for the life of the church in the districts for which they are responsible. Their activities are outlined in the individual reports for each District that are attached as annexes to this report.

Trinity Centre Sub-committee, established by resolution of the PCC in 2011, which is responsible for the maintenance of the building and provision of ecclesiastical services in Trinity Centre that were formerly the responsibility of the Holy Trinity District Church Council. It also manages the separate funds of the various community outreach programmes.

Finance Sub-committee, established by resolution of the PCC in 2011, to identify and implement the changes to reporting made necessary by the change from exempted to registered charitable status. After a deal of work at enabling the consolidation of accounts during 2012 there has been less work for this group in 2013, particularly given the uncertain direction of overall financial strategy within the Diocese as a whole. Now that this is becoming clearer the group plans to meet again to consider how we may best respond to the significant changes that are likely to take place in the way the mission and ministry of the Church is funded locally.

Discipleship Sub-committee, established by resolution of the PCC in 2011, to identify ways in which people might be encouraged to explore their faith in more depth and recommend possible developments to the PCC/Ministry Team. This committee met to discuss and agree an outline programme of activities for the year.

¹ <http://www.legislation.gov.uk/ukcm/Eliz2/4-5/3/contents>

² <https://www.churchofengland.org/about-us/structure/churchlawlegis/church-representation-rules/church-representation-rules-online.aspx>

Objectives and activities

The primary object of the PCC is ‘the promotion of the Gospel of our Lord Jesus Christ according to the doctrines and practices of the Church of England’. In doing so it ‘co-operates with the minister in promoting in the parish the whole mission of the Church, pastoral, evangelistic, social and ecumenical’.³ In the case of Louth, where a Team Ministry is in place, this co-operation is both with the Team Ministry (Rector and Team Vicar) and the Parish Ministry Team that they oversee. The PCC held four ordinary meetings during the year and a short meeting to approve the Accounts prior to the APCM. In addition much of its business is transacted through the work of the District Church Councils or Churchwardens and Sub-committees working to support the ministry of the Church that is exercised by the Ministry Team. Across the Parish the focus of the work of the Ministry Team continues to be to realise the aspirations agreed at the APCM in 2013:

The Parish Ministry Team, supported by the PCC, will seek to encourage the Church to fulfil this calling by:

- Maintaining a rhythm of prayer and resourcing worship;
- Encouraging people to grow closer to God in faith;
- Reaching out beyond the boundaries of the gathered Church to all those touched by Christ;
- Serving the wider community and making visible God’s love for all; and
- Enabling each of us, as the body of Christ, to fulfil our vocation by resourcing our work.

A summary of each of these areas or themes within our work follows, with the members(s) of the Ministry Team responsible for overseeing work in that area identified in brackets. More detailed reports are included as Appendices to this Report:

Our five year goals are...	The planned steps this year are...	Our progress...	Work left to do includes...
1. We aim to establish and maintain a rhythm of prayer and to resource worship appropriately throughout the parish [NB]	To maintain a pattern of Daily Prayer for and on behalf of the local community, and to support the worship of those who gather in our congregations.	From Jan 2013 Morning Prayer has taken place each weekday, with Evensong on Sundays. In 2014 this pattern saw the addition of Midday Prayer on Saturdays. On Red Letter Days a service of communion/eucharist takes place either within the existing pattern of services, in place of Morning Prayer or as an additional service at St Michael’s.	To maintain the pattern of daily prayer, Sunday worship, and remain alert for further opportunities for prayer and worship. [NB]
2. We aim to encourage people to grow closer to God in faith [NB/PH]	To maintain and develop relationships with schools across the parish. To maintain and develop activities for families and young people in a variety of appropriate locations. To continue and further promote the Discipleship programme.	Links have been made with most schools in the town, including regular engagement with: KEV-IGS, Cordeaux, Kidgate, Lacey Gardens, St Michael’s and Greenwich House schools. The following activities have continued: Parent and Toddler Group at St James, Tinies Breakfast at St Michaels and Messy Church at Trinity Centre. They have been joined by a Dads Group meeting at Trinity Centre on Saturday mornings. Drawing together existing and new provision, including: ‘Pilgrim’ groups, ‘Exploring...’ mornings, Lent/Advent courses, Film evenings, Bible Study and Discussion Groups have continued.	To explore possible links with Eastfield Infants and St Bernard’s Special Schools. [CH] Support current activity. [NB, KT, RP & GG] Support current activity. [NB & PH]
3. We aim to reach out beyond the boundaries of the gathered Church to all those touched by Christ [CH]	Baptisms: Establish a trial Baptism Partner scheme to broaden the engagement between the Church and families. Weddings: To continue a programme of preparation for wedding couples to enable them to gain the full benefit from a church wedding. Funerals: To introduce an All Souls service as focus for continued visible ministry to bereaved families. Reflect on the ways in which we provide pastoral care following a funeral, exploring how we might link existing provision more effectively and supplement this where needed. Home Communion/Pastoral visiting: to continue serving all Care Homes in the parish where we know there is a need.	After positive initial feedback from the trial in autumn 2014. This needs reviewing to address administrative needs and recruit more partners. The first course ran in Spring 2013 with positive feedback from participants, and repeated in 2014 and 2015. Again there is positive feedback from most of those participating. This service, to which all families we had ministered to were invited, was introduced in 2013. This was repeated in 2014 and 2015 with increases in the number of people engaging with this opportunity for reflection. Home Communions continue to cover all required Care Homes on a regular basis.	To review and develop this scheme – particularly seeking more people to act as Baptism Partners. [CH] Continue to provide annual preparation sessions to support the individual preparation that takes place with the officiating priest. [NB/CH] Ongoing work to identify and train bereavement visitors. [CH] Look at how we link provision of pastoral visits and home communion with networks in each District and the wider Parish. [CH]

³PCC (Powers) Measure 1956.

4. We aim to serve the wider community and make visible God's love for all [NB/GG]	To seek further funding for the work of Trinity Centre for the period from February 2015 onwards. [GG]	All our regular core activities have been maintained and the PHT supported projects ran as planned. During the course of the year budget planning took place so that all routine expenditure now takes place without drawing on reserves.	Continue to monitor budgets to maintain the sustainability of the Centre and its activities. [GG]
	Implement Men's Shed project during 2015. [GG]	The Men's Shed project has taken shape and is now taking steps to form as a separate community group. A number of outreach activities have taken place.	Continue to support the project and develop its outreach activities, maintaining links with Trinity Centre and the wider parish. [GG]
	Complete pilot phase of Street Chaplain project, and seek to further develop from September 2015 onwards. [NB]	Partnership has continued through 2015.	Continue to investigate the possibilities as to how this may develop. [MH]
5. We aim to enable each other, as part of the body of Christ, to fulfil our vocation by resourcing our work [NB/CH]	Continue current activity within the Discipleship Programme, and offer to wider audience via Diocese. [NB]	Some 'Exploring...' events were promoted more widely.	As the Diocesan provision develops there may be further opportunities to develop this provision as a partnership.
	Modify Lay Training as required following proposed changes to Diocesan provision. [NB]	Lay Ministry Discussion group has continued and fits within diocesan provision.	If there are further changes this will need incorporating into our local training. [NB]
Other things to consider may be...			

Ministry Team Meeting Dec. 2014, updated for 2016 APCM

Each of our church communities

Mission Communities – a vision for the local church

We continue to seek to discern God's will for the various gathered communities that make up the Parish of Louth. Within the Mission Communities Strategy that was introduced to the Diocese in 2014 the six locations (spread across five districts) comprise the Parish of Louth Mission Community. Within this St James' and Trinity Centre fulfil the function of being a Key Mission Church, with a contribution to make to the wider work of the Diocese as well as serving their respective local needs. Each of the other churches in the Parish are seeking to be Local Mission Churches – serving the needs of the gathered community that meets to worship in them and to connect with the needs of their local area (in most cases identified as their District). In the initial exercise of reflecting on our work South Elkington discerned that it had many of the features of a Celebration/Festival Church and it is seeking to build on these strengths in its future work.

Mission planning

Over the past two years we have gradually worked to develop a Mission Plan for each area of our work, and in 2015 this was completed by committing to paper our hopes for the future life of the church in Welton le Wold and South Elkington. Alongside this there has been the opportunity for each of the other Mission Plans to be updated to reflect where we now feel called to work.

A copy of the Annual Report for each District (together with its Mission Plan) is appended to this Report.

Safeguarding

Safeguarding documentation was reviewed during the year and our processes were found to be in line with recommended practice. The PCC commits to reviewing our safeguarding practice at least once each year.

Financial review

The PCC is responsible for the direct management of accounts relating to those expenses that are parish-wide in nature, and also holds reserves (both restricted and unrestricted). In addition to these directly managed funds, the PCC is responsible for those funds that are managed at a local level by the five DCCs and the Trinity Centre Committee. Again, most of these funds include a mixture of revenue and reserve accounts; some having significant sums invested in reserves.

Accounts are prepared in line with the Church Accounting Regulations 2006, which mandate compliance with the Statement of Recommended Practice issued by the Charity Commission under the Charities Act 1993. Currently, the accounts of each District are presented and adopted at the Annual District Meeting and the accounts relating solely to the PCC are presented for adoption at the Annual Parochial Church Meeting. These accounts are subsequently consolidated.

During the year the PCC looked to develop reserves and investment policies and, whilst this work is ongoing, the following statements represent current policy in these areas:

Reserves Policy: The PCC holds reserves to cover peaks and troughs in income and expenditure, to protect against uncertainties in future income and to deliver future charitable activities. The Parish Treasurer will review reserves with DCC Treasurers on an annual basis to ensure adequate cover for planned activities and to identify future risks for the PCC.

Investment Policy: The PCC holds investments through The Central Board of Finance (CBF) Church of England Funds managed by CCLA Investment Management Limited, deposit accounts including The CBF Church of England Deposit Fund and UK banks, and current accounts with UK banks. The Parish Treasurer will review the detail of the investments with DCC Treasurers on an annual basis and confirm the institutions and investments acceptable to the PCC for any investments.

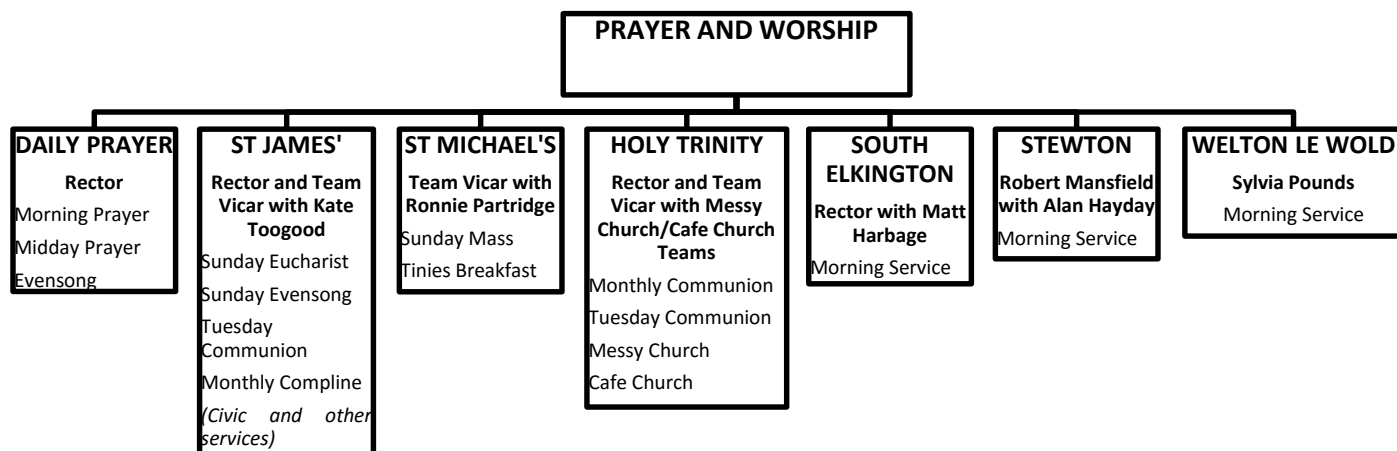
Funds held as custodian trustees on behalf of others

Trinity Centre undertakes a number of activities that serve the wider mission of the Church to the local community. The assets of these various projects are held in trust by the PCC, and managed on their behalf by the Trinity Centre Sub-Committee of the PCC. Each project held in trust is accounted for as a separate designated/restricted fund within the Trinity Centre accounts. Currently these projects include:

- The Louth and District Community Larder (run on behalf of Churches Together in Louth and District)
- Louth Men's Shed

Theme 1: Prayer and Worship [Rector]

This theme has at its heart the Church's identity as a spiritual body that is a people of prayer – seeking to open our souls to God's presence and responding with worshipping hearts. Within the Parish this becomes a reality both in the corporate prayer of the Church and in the gathering of a variety of worshipping communities across the five Districts served by the Parish Churches.



Corporate prayer

Within the work of the wider Church we join with others to sustain a pattern of daily corporate prayer throughout the week – praying for our community and the wider world, and the work of the Church within the Diocese and beyond. The pattern of Daily Prayer continues to undergird our life and a small but faithful group of people join the Ministry Team in this aspect of ministry for and on behalf of the wider community we serve in the Parish and wider Diocese.

Worshipping communities across the parish

In addition to this rhythm of prayer the Ministry Team helps resource worship for thirteen gathered congregations, with a member/members of the Ministry Team acting as a primary point of contact for each congregation. As much of our worship takes place within the context of the individual component Districts and therefore a more fulsome account of much of our worship is found in the Reports from Districts (found as Appendices to this Report). 2015 saw a continued rise in the total attending worship across the parish, with most districts seeing either stable or increasing attendances and a number of new opportunities for worship engaging people in different ways. It is also notable that the number of people attending church at festivals and other special events saw a further increase (though this may be in large part due to the inSpire500 celebrations at St James'). The overall pattern is that whilst worship on Sundays seems to be generally stable or growing, there is a greater potential for growth beyond this – with the challenges that this might bring in terms of developing and maintaining fellowship and discipleship across a diverse range of worshipping communities.

The following offers a summary of attendance trends during the past year:

	2015	2014	2013	2012	5yr average
Usual weekly Sunday attendance	138 (160) ⁴	126 (149)	135 (154)	116	-
Usual weekly Weekday attendance	18	16	16	12	-
Usual monthly Fresh Expression attendance ⁵	120	101	57	0	-
Usual weekly attendance	180 (208)	167 (190)	165 (184)	-	-
Christmas attendance	1,623	1,724	1,536	1,131	-
Christmas communicants	274	328	317	325	-
Easter attendance	366	339	329	315	-
Easter communicants	224	237	255	233	-
Total attendance at services on Sundays and Festivals⁶	10,163	9,429	9,325	6,943	-
Baptisms	69	63	58	56	-
Weddings	26	18	28	32	-
Funerals	84	98	94	98	-

⁴ The figures in brackets include Sunday evening services

⁵ Messy Church throughout 2014 and Prayer and Pint from Summer 2014 onwards, with Café Church from September 2015 onwards.

⁶ These figures are the combined figure for St James' and St Michael's

Theme 2: Growing closer to God [Rector with Paul Hill]

This theme seeks to provide opportunities for people to grow in faith and to this end our Discipleship Programme, I am pleased to report, is going well.

The monthly 'Prayer and Pint' evenings seems to have settled down to a hard core of members with others who appear every now and again. I am pleased that so many people find these sessions bring light into darker and colder evenings. To give you a flavour of the evening, we pick a topic. Usually either Nick or Paul give a brief address on that topic before the beautiful service of Compline, led in monastic chant by Kate Toogood. We then go round to the Wheatsheaf and, with the guidance of some learning materials, discuss the topic. Over the year we have taken in some tricky material: the Trinity, the incarnation, why there is evil in a world created by a good God, poverty, angels, the relationship between faith and science, how to understand the Bible and many more.

The Pilgrim Groups continue and then we have our occasional Saturday morning sessions under the banner 'Exploring...'; sometimes presented by a guest speaker and done interactively. These have been particularly successful, with decent numbers in attendance and much appreciation from participants. Recently we had 'Exploring' session in icons and on science and religion. To come we have a session on Issues in Mental Health. This is booked for May.

The Lent Groups were an ecumenical venture with CTLD. There were 3 groups in total that met throughout Lent. One venue was at The Vicarage, another at Nichol Hill and the third at High Holme Road. There were 50 attendances at the group meeting at the Vicarage and about 30 at Bernard's and Pat's (no stats for Nichol Hill). About 40 people attended Advent Quiet Days arranged at the Little Lane Vicarage by Chris Hawkins. People reported valuing the groups for their fellowship, and for the opportunities they presented to learn together and to reflect more deeply on our faith.

Over the years, there have also been joint sessions with Louth Film Club involving one of their films followed by a discussion session a week later. It is hoped that these should continue on an occasional basis.

Dr Paul Hill

Theme 3: Reaching out to all those touched by Christ

[Team Vicar with Sylvia Pounds]

Work continued in 2015 to deepen our engagement with those being touched by the Church through the Occasional Offices (Baptism, Marriage and Funeral). Our Marriage Preparation sessions are now an integral part of what is offered to all couples getting married; providing a social evening to meet other couples and a half-day where they can reflect on marriage and the ceremony alongside other couples before having individual preparation sessions with the priest taking the service. Feedback from couples indicates that these occasions were beneficial as they prepared for their wedding.

The Baptism Partner scheme floundered towards the end of the year due to a combination of lack of availability of volunteers and the need of some of the Baptism Partners to understand more clearly their role and purpose on behalf of the wider church. The Team Vicar attended a conference on Baptism, which was part of the Archbishop's initiative to improve access to Baptism across the Church of England and to re-invigorate the church's mission in this area of its pastoral life. It is hoped that the staff team will have worked through all the implications of this new initiative in the coming year.

Our Home Communion ministry is growing with increased numbers of people receiving Holy Communion in our care homes this year. There is room to extend this ministry to the care homes that we do not currently cover now that we have an additional member of the staff team and this will be worked through in the coming year. However, this ministry need not be confined to the current team of authorised ministers, and we hope to train individuals in our congregations who have a vocation to this ministry to become authorised ministers in the future. Sylvia Pounds writes:

"When administering home communion to individuals there are moments that are very moving and also one time of great humour when I was five minutes late for a care home communion service; to be greeted by the whole care home congregation singing "Why are we waiting" and bashing the nearest surface with spoons. Their sense of rhythm was very good!"

This attests to the value of the ministry in our community beyond the walls of our churches. We continue to provide Holy Communion to people individually either in hospital or at home.

The All Souls service was well attended again this year and feedback from those attending indicated that it was helpful to them as they continued to journey through their grief. The Team Vicar's intention is to train a team of Bereavement Visitors in the future to assist with follow-up visits after funerals and to connect bereaved relatives and friends with the wider ministry and fellowship of the parish.

Theme 4: Making visible God's love for all

[Rector with Community Outreach Manager]

Our work in reaching out to the wider community takes many forms, but two aspects of this form a distinctive part of our work: the Ministry to Visitors that is a part of the life of St James'; and the Community Work that is based at Trinity Centre. Whilst the first of these is covered in the separate report on the work of St James' and the work of Trinity Centre in its separate Report, this report offers a summary of the activities reaching out into the community in other ways on behalf of the Parish of Louth.

Louth Men's shed

This project has moved from the development stage to consolidation stage. The Shed opened in July 2015 and is now open Monday, Wednesday & Friday from 10:00 to 14:00. The shed membership is steadily growing, we have an average of 3 new members a month and we have now 32 paying members who pay £24 per year. The Shed has completed projects for Louth Town Council, local schools and community groups including St James'. The group meets regularly every month at the Gas Lamp and recently held the first AGM; the group has recently appointed a volunteer coordinator and is looking at additional times for opening. The shed continues to grow in membership currently woodwork & cycle repairs are on offer but we are now planning on additional activities:

- Gardening
- Fly fishing
- Bee keeping

Shed Buddies

Due to men often being excluded from activities and services be this my design or by men not seeing the benefit of attending. Shed buddies are volunteers that will receive training to support men who have difficulty in engaging in activities. The buddies will receive nationally accredited training and support.

Lads Shed

The lads shed is hosted at Nichols Youth project on a Friday evening. The aim is to provide an intergenerational project between Nichols & the Men's Shed. Numbers are steady at 10 lads on a Friday evening at Nichols and the plan is to get the lads up to the Shed at least 2 evenings a month,

Dom's Place

Ellie's brother Dom committed suicide in 2012. The group which is a combination of a youth club and a support group has been set up by Dom's sister, Ellie. The group is based at the Park Avenue Youth Centre and is aimed at 13-19 year olds fortnightly from 16:00 to 18:00.

Activities will include arts, cooking, meditation, card making, cognitive behaviour therapy and self-esteem activities. The club will support young people suffering from problems such as depression, bullying, self-harm, eating disorders, worries about sexual identity and suicidal feelings.

Numbers have been steadily growing at the group which is becoming a vital service to young people.

Dads Group

The dads group takes place at the Trinity Centre on the First and Third Saturday of each month in partnership with Louth Children's Centre. The group is beginning to develop and we have regular dads attending. The activities allow the dads to play with their children and have a chat and a brew with other dads which is proving successful. Additionally bacon rolls are available to the dads and children. The group has received funding and is hoping to go on trips out when the better weather arrives ideas of trips are being sought from the dads.

Shine Mental Health Network

Shine is an award winning network of people and organisations involved in or with experience of mental health and mental ill health and distress. We think we can do a lot to put people in touch with each other, and to help them work more closely and effectively together. The Trinity Centre & Louth Men's Shed has received funding during 2014 & 2015 from Shine; I am now on the board of governors for the Shine Network which provides the opportunity to:

- Cascade information through local networks
- Identify potential funding streams
- Inclusion in funding and policy processes

Counselling & Psychotherapy

I provide a small counselling service to people who are struggling to access local services or are identified by the ministers within the ministry team.

Refugees

I have recently been asked to coordinate the activities for the local Refugee group. My role is to coordinate the collection, storage and distribution of clothing etc

Quality of Life Network

This network was set up to enable organisations within East Lindsey to share information and best practice and to provide a focal point for the improvement of health the group is sponsored by Lincolnshire CC Public Health.

Lincolnshire Community Assistance Scheme (LCAS): I attend regular meetings LCAS is here to help people going through unexpected difficulties and who need urgent assistance. The scheme gives help to meet your basic needs as quickly as possible, and can also provide advice and support to help you avoid similar problems in the future. LCAS provides funding towards the Community Larder. As in 2015 LCAS was under pressure due to cuts in Local Government 2016 is no different and it is not known if the service will remain available post April 2016.

Other groups I attended by Community Outreach Manager:

- Louthesk Deanery Synod
- St Michaels Church House Users Group (CHUG)
- Louth Children's Centre Advisory Group
- Louth & District Seniors Forum
- Louth & District Help for the Homeless (LDHH)
- Trustee Nichols Youth Project
- Lincolnshire Partnership Foundation Trust (LPFT)
- Health Watch Network Forum
- Welfare Reform Networking group
- East Lindsey Homeless Forum
- LCAS Skegness Partnership
- Community Hub Network

Greg Gilbert, Community Outreach Manager

Theme 5: Resourcing our work [Rector and Team Vicar]

This theme recognises that none of the work above happens without the support and engagement of many people in so many ways across the Parish of Louth.

Parish Ministry Team

As outlined in past year's report, though configured differently, the stipendiary element of the Ministry Team was planned to return to its historic full strength of four by the summer of 2015. The Parish Ministry Team now consists of the following elements:

- Team Rector and Team Vicar, responsible for the oversight of ministry across the whole Parish
- Non-stipendiary Ministers and Lay Readers, some with specific areas of responsibility
- Community Work Team (including Outreach Manager and Trinity Centre staff)
- Assistant Curates based in the Parish of Louth for the second part of their training

Chris Hawkins joined the Parish in January 2015 as Team Vicar and Matt Harbage joined us in July 2015 as a second Assistant Curate (in training).

Lay Ministry Teams

Whilst the Parish Ministry Team works across the whole parish there is much work that takes place in individual districts and is reported separately in the annual reports from each district.

Training and support

As well as provision made by the Diocese the various activities of the Discipleship Programme, together with the Lay Ministry Discussion Group are intended to help support people in their ministry – wherever and however that may be.

The financial aspects of resourcing our work are dealt with in more detail in the financial report and attached accounts.

